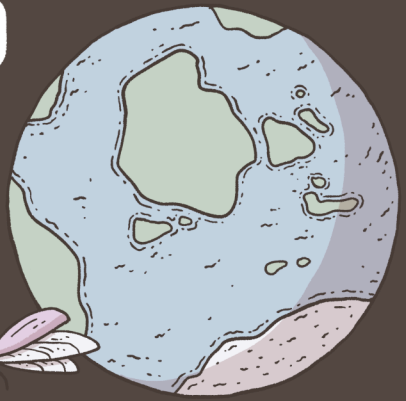


FLIGHT OF THE MOON BEETLES



EVERY DECADE, THE MOON BEETLES TAKE FLIGHT, CARRYING THEIR LUNAR SPHERES TO SCATTER ACROSS THE PLANET'S SURFACE FILLING THE WORLD WITH MAGIC.

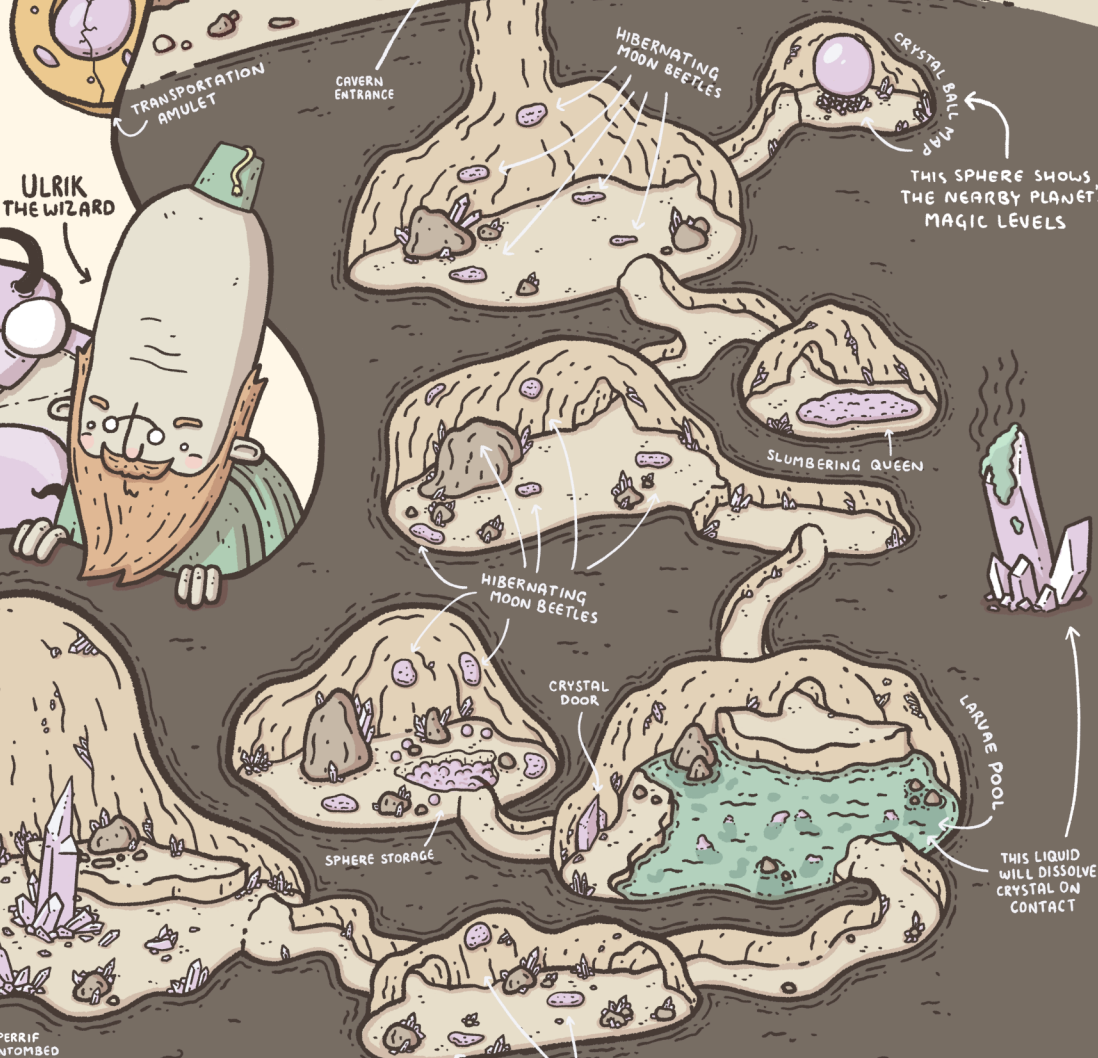
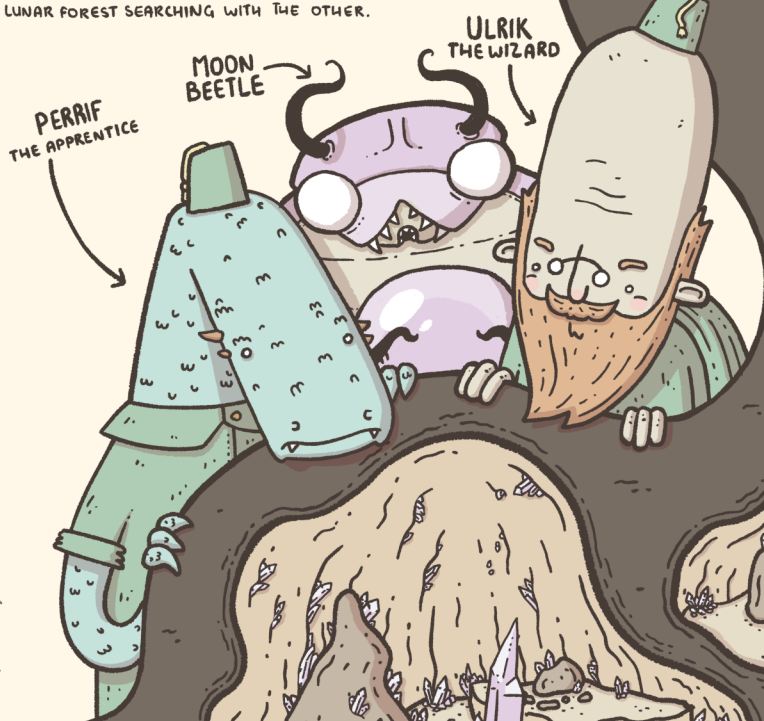
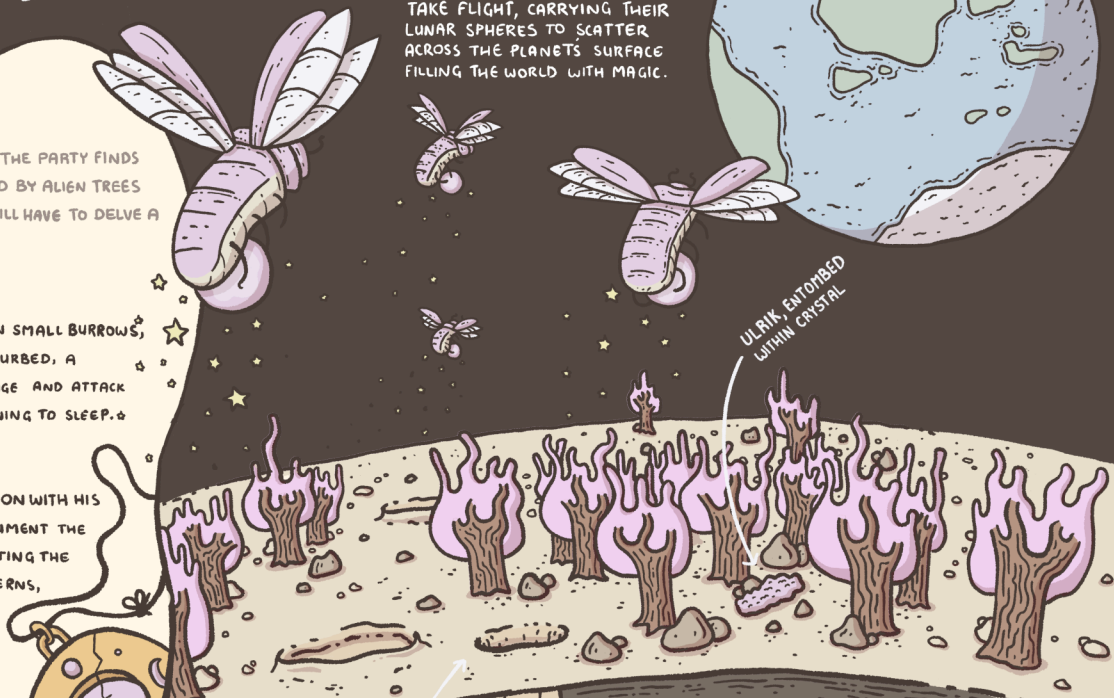
AFTER MEDDLING WITH A MYSTERIOUS DEVICE, THE PARTY FINDS THEMSELVES STRANDED ON THE MOON. SURROUNDED BY ALIEN TREES AND SCATTERINGS OF PINK LUNAR CRYSTALS, THEY WILL HAVE TO DELVE A BIT DEEPER TO FIND THEIR WAY HOME.

FAST ASLEEP

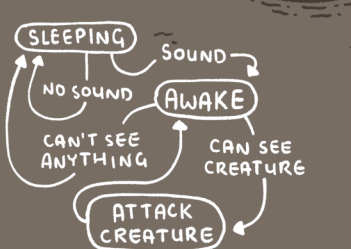
THESE GIANT BEETLES SPEND MOST OF THEIR LIFE IN SMALL BURROWS, HIBERNATING BENEATH A CRYSTALLINE CAP. IF DISTURBED, A MOON BEETLE WILL AWAKE IN AN UNCONTROLLABLE RAGE AND ATTACK ANY UNFAMILIAR CREATURE IN SIGHT BEFORE RETURNING TO SLEEP.

ULRIK & PERRIF

LONG AGO, THE WIZARD ULRIK TRAVELLED TO THE MOON WITH HIS APPRENTICE PERRIF, HOPING TO DISCOVER AND DOCUMENT THE MANY SECRETS OF THE LUNAR SURFACE. AFTER MEETING THE MOON BEETLES AND EXPLORING THEIR MAGICAL CAVERNS, ULRIK DESCENDED INTO MADNESS. HE WAS ENAMOURD WITH THE INTENSE RAW POWER OF THE LUNAR SPHERES AND INTENDED TO TAKE THEM ALL. PERRIF, KNOWING THIS WOULD LEAD TO DISASTER, ATTACKED ULRIK, BREAKING HIS AMULET IN TWO, MAKING IT IMPOSSIBLE TO RETURN HOME. THE TWO MET THEIR END SHORTLY AFTER; PERRIF HIDING DEEP IN THE MOON BEETLE CAVES WITH ONE HALF OF THE AMULET AND ULRIK WANDERING THE LUNAR FOREST SEARCHING WITH THE OTHER.



BEETLE BEHAVIOUR



WRITTEN & ILLUSTRATED BY BODIE HARTLEY
[WWW.SLOWQUEST.COM](http://www.slowquest.com)

HTTP://CREATIVECOMMONS.ORG/LICENSES/BY-SA/3.0